

Transposed for B-flat Clarinet

## I. CONCERTO

Cont.-Tr.

6

12

17

22

28

## II. CHORUS

Cont.-Tr.

4

8

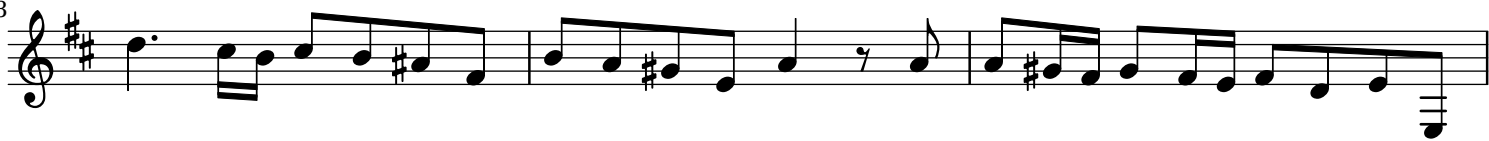
12

16

20

2

23



26



30



34



38



### III. ARIA

Cont.-Tr.



5



10



14



19



24



29



34



## IV. CHORUS

Cont.-Tr.

10

19

27

36

45

55

Detailed description: This block contains the musical notation for the Chorus section, measures 1 through 55. The music is written for a single melodic line on a treble clef staff. The key signature has two sharps (F# and C#), and the time signature is 3/4. The notation includes various note values (quarter, eighth, and sixteenth notes), rests, and dynamic markings. Measure numbers 10, 19, 27, 36, 45, and 55 are indicated at the start of their respective staves. The section concludes with a double bar line at measure 55.

## V. ARIA

Cont.-Tr.

4

8

11

15

Detailed description: This block contains the musical notation for the Aria section, measures 1 through 15. The music is written for a single melodic line on a treble clef staff. The key signature has two sharps (F# and C#), and the time signature is common time (C). The notation includes various note values (quarter, eighth, and sixteenth notes), rests, and dynamic markings. Measure numbers 4, 8, 11, and 15 are indicated at the start of their respective staves. The section concludes with a double bar line at measure 15.

4  
19

Da capo

This musical staff contains measures 4 through 19. It is written in treble clef with a key signature of two sharps (F# and C#) and a common time signature (C). The melody features a mix of eighth and sixteenth notes, with some rests. The staff concludes with a double bar line and the instruction 'Da capo'.

## VI. RECITATIVE

Cont.-Tr.

This staff is for the 'Cont.-Tr.' part of the 'VI. RECITATIVE' section. It is in treble clef with a key signature of two sharps and common time. The melody consists of a series of half and quarter notes, ending with a double bar line.

## VII. ARIA

Cont.-Tr.

This staff is for the 'Cont.-Tr.' part of the 'VII. ARIA' section. It is in treble clef with a key signature of two sharps and common time. The melody begins with a quarter rest followed by a series of eighth and sixteenth notes, ending with a double bar line.

4

This staff contains measures 4 through 8 of the 'VII. ARIA' section. It continues the melody from the previous staff, featuring various rhythmic values and a double bar line at the end.

8

This staff contains measures 8 through 11 of the 'VII. ARIA' section. The melody continues with a mix of note values, including some beamed sixteenth notes, and ends with a double bar line.

11

This staff contains measures 11 through 15 of the 'VII. ARIA' section. The melody continues, showing a variety of rhythmic patterns, and concludes with a double bar line.

15

This staff contains measures 15 through 19 of the 'VII. ARIA' section. The melody continues, featuring a half note and a quarter note, and ends with a double bar line.

19

This staff contains measures 19 through 31 of the 'VII. ARIA' section. The melody continues with a mix of note values, including some beamed sixteenth notes, and ends with a double bar line and the instruction 'Da capo'.

## VIII. CHORUS

Cont.-Tr.

This staff is for the 'Cont.-Tr.' part of the 'VIII. CHORUS' section. It is in treble clef with a key signature of two sharps and a 3/4 time signature. The melody consists of a series of quarter and eighth notes, ending with a double bar line.

9

This staff contains measures 9 through 19 of the 'VIII. CHORUS' section. The melody continues with a mix of note values, including some beamed sixteenth notes, and ends with a double bar line.

19

This staff contains measures 19 through 31 of the 'VIII. CHORUS' section. The melody continues with a mix of note values, including some beamed sixteenth notes, and ends with a double bar line.

31

This staff contains measures 31 through 41 of the 'VIII. CHORUS' section. The melody continues with a mix of note values, including some beamed sixteenth notes, and ends with a double bar line.